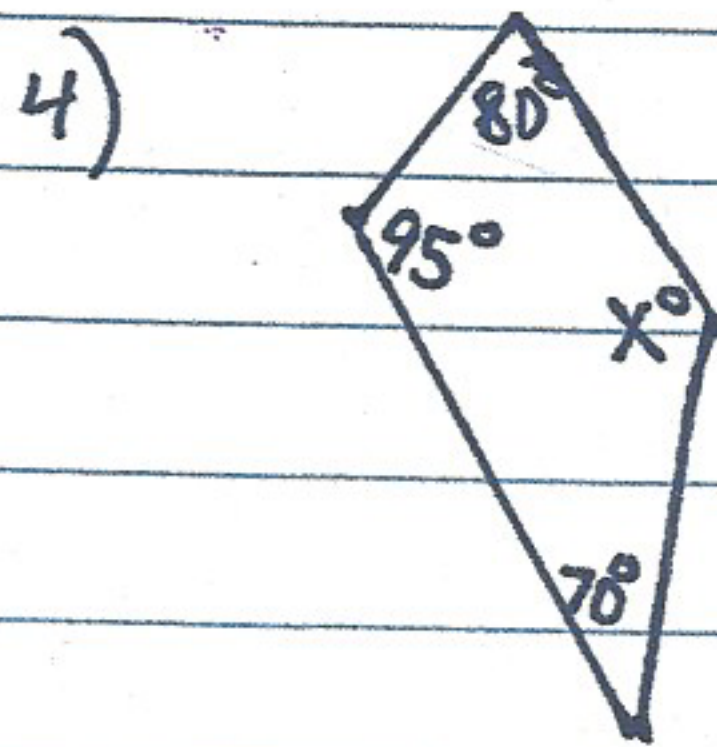
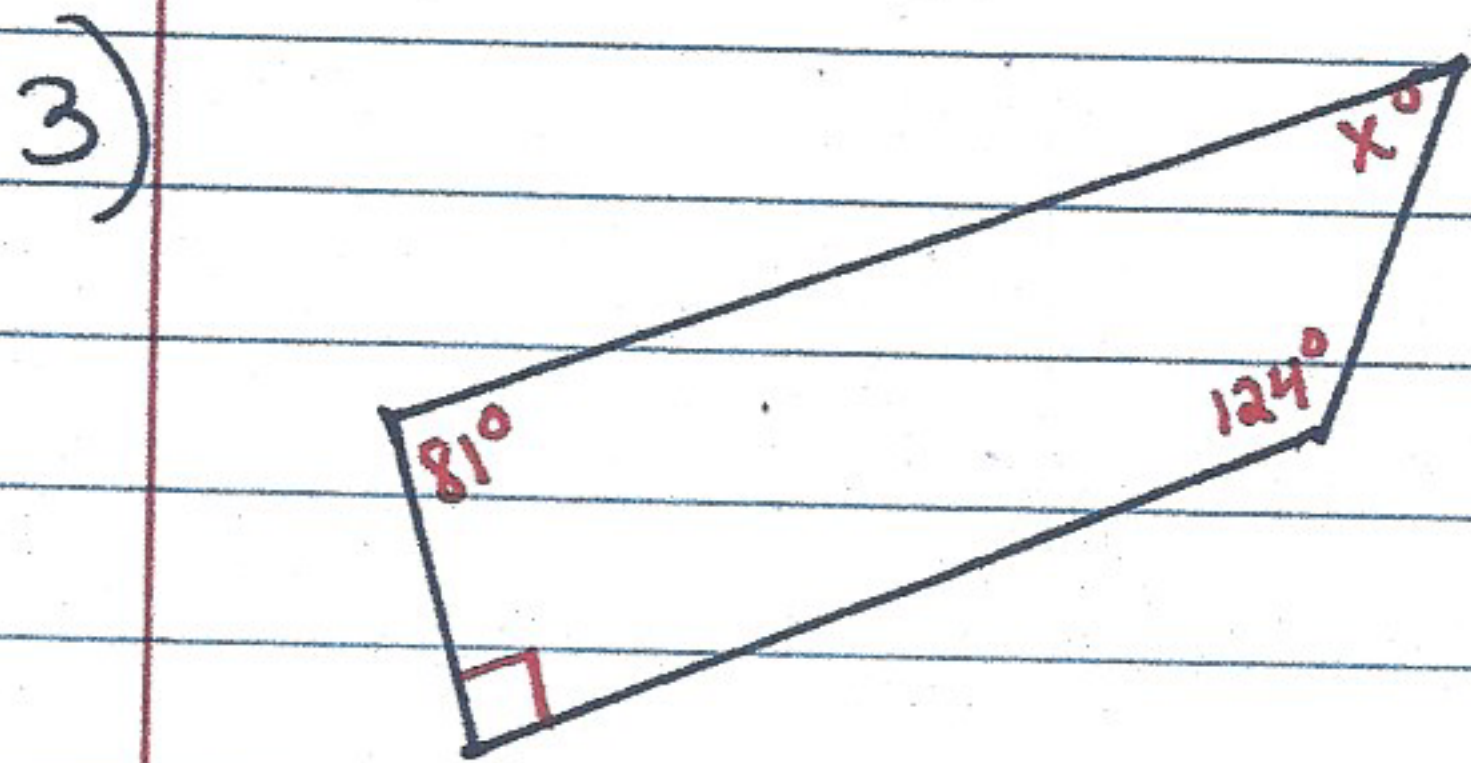
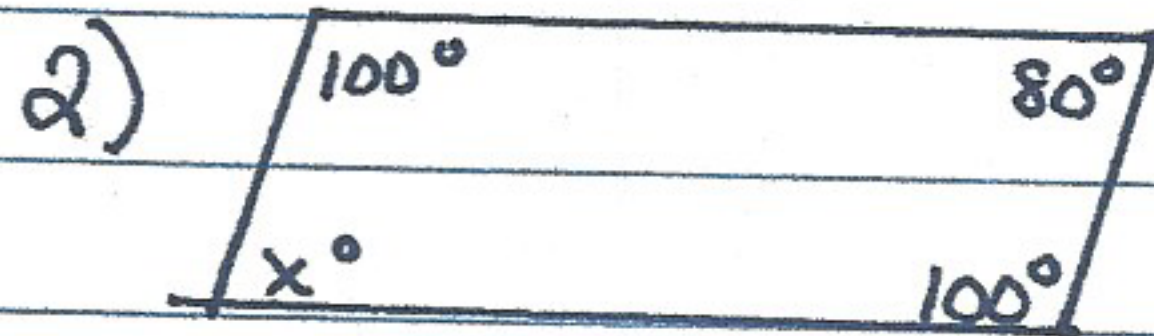
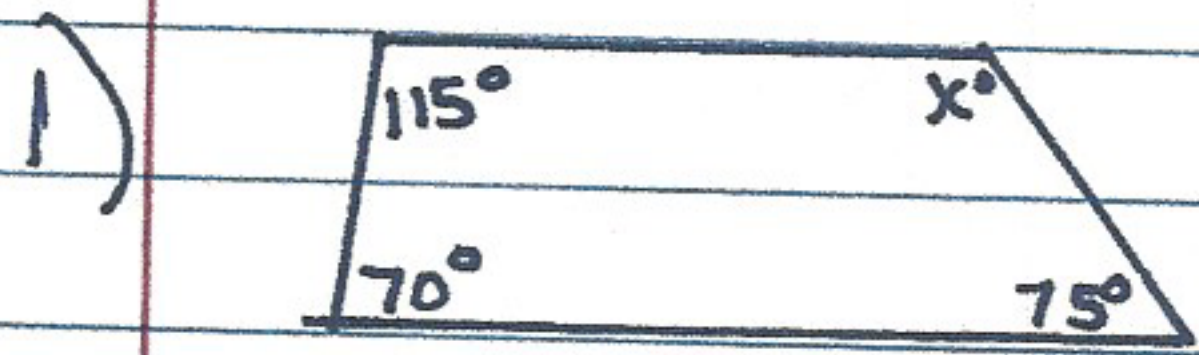


7.4 Quadrilaterals (continued)

The sum of the angle measures of a quadrilateral is 360° .

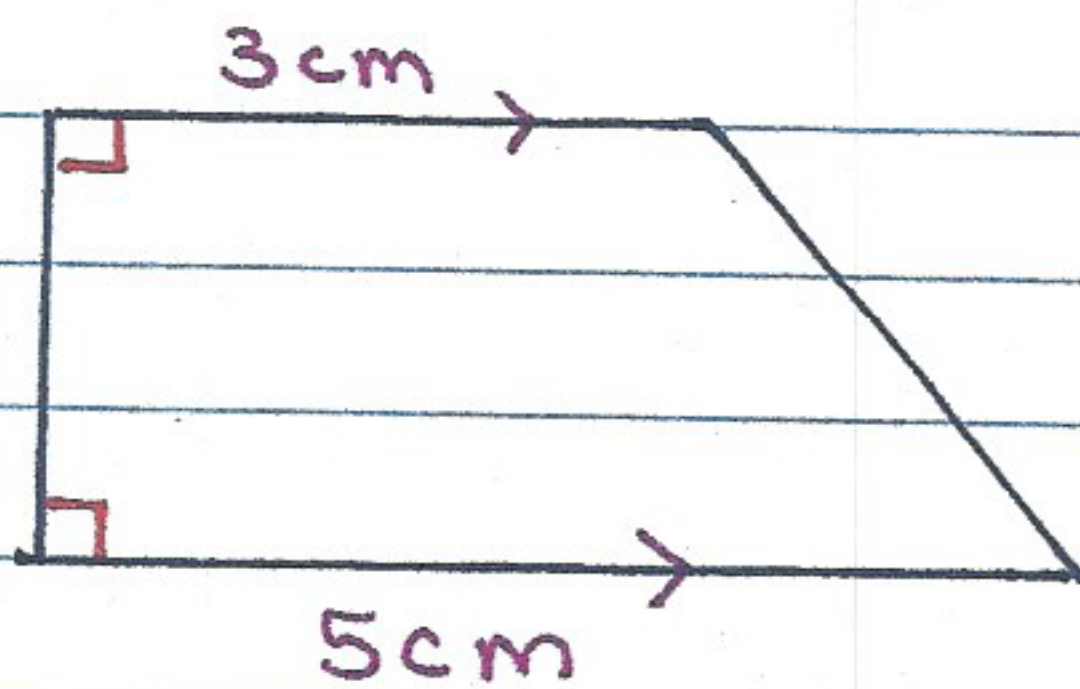
Find the value of x . (not drawn to scale)



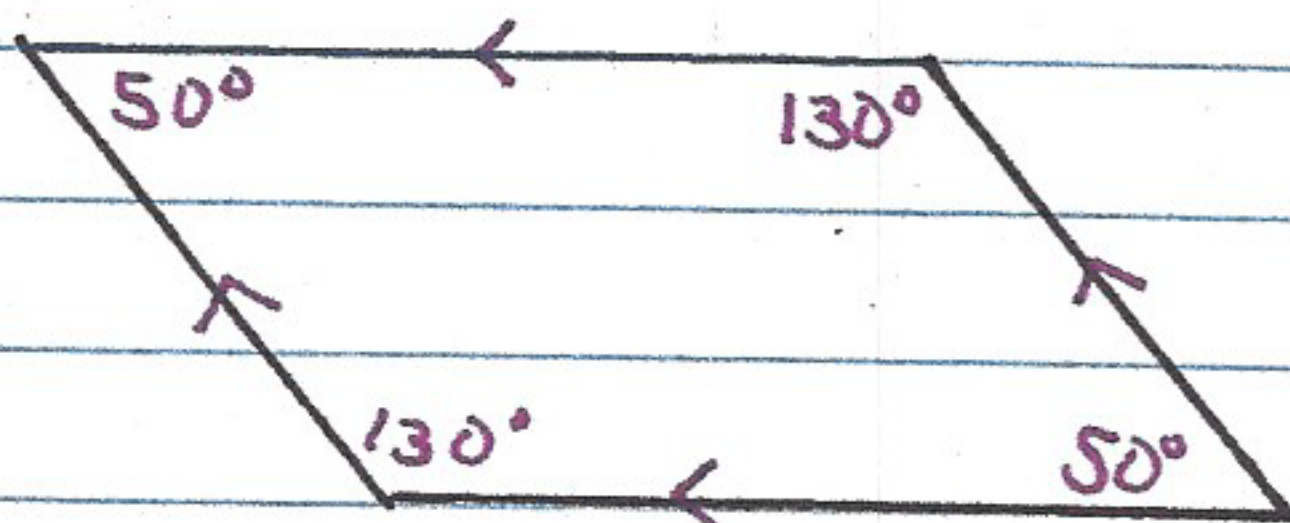
- 1) 100°
- 2) 80°
- 3) 65°
- 4) 115°

Construct each quadrilateral.

- 1) a right trapezoid whose parallel sides have lengths of 3 cm and 5 cm. Label



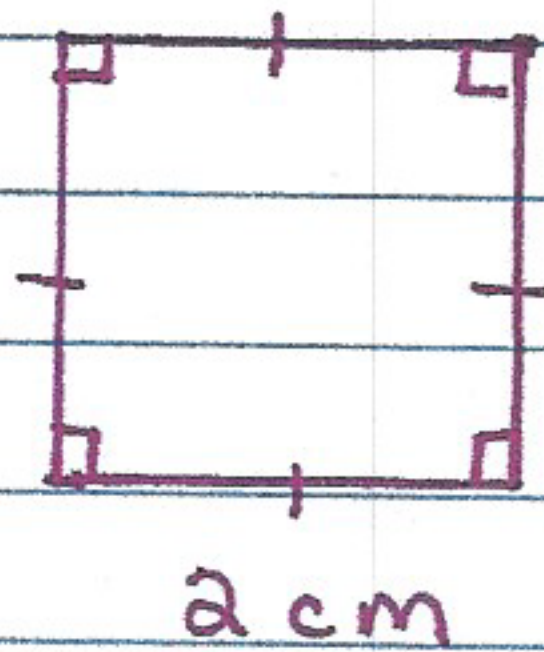
- 2) a parallelogram w/a 50° angle and 130° angle. Label



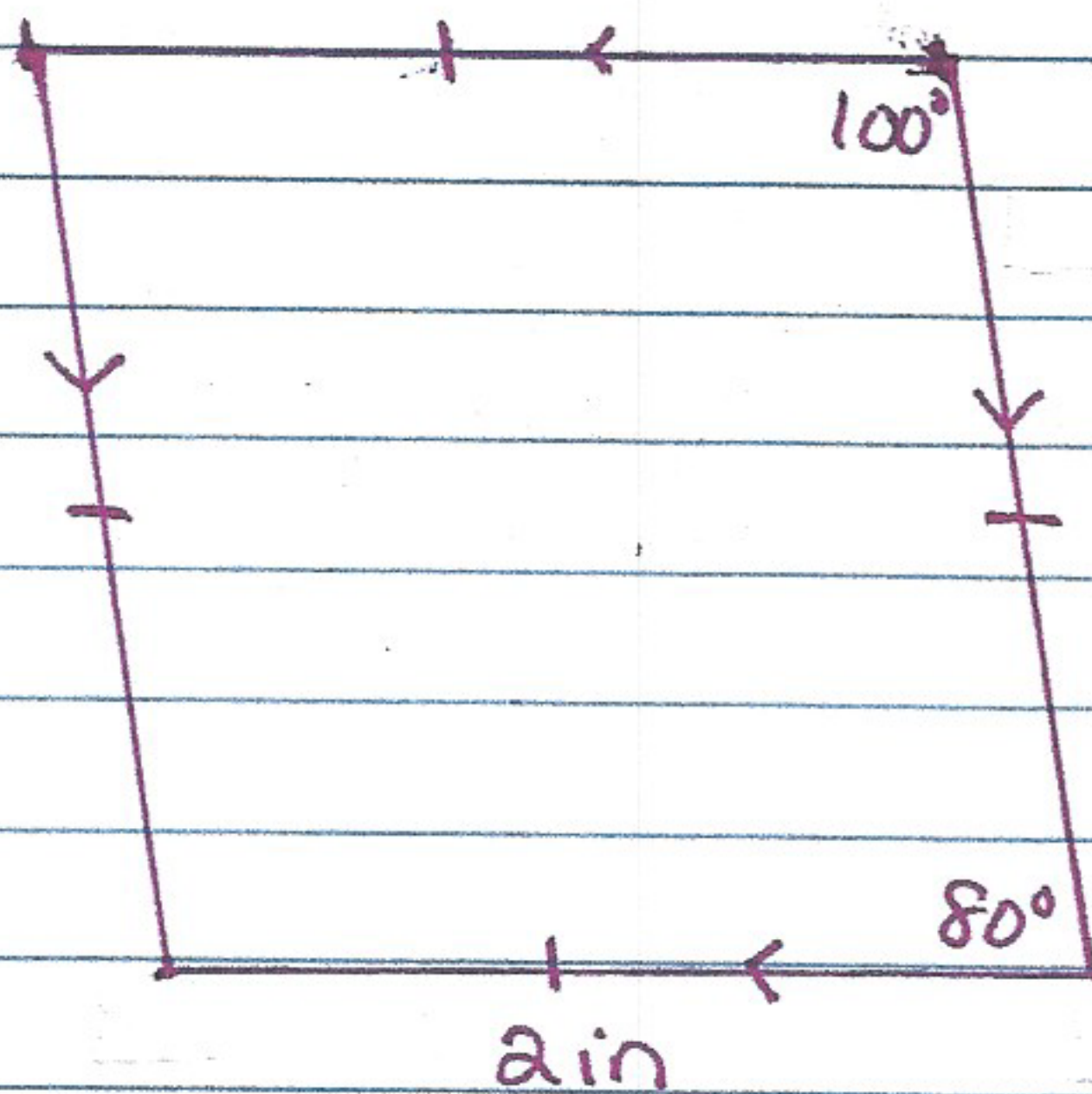
- 3) a kite that is also a rectangle

not possible

4) a square w/ a side length of 2 cm; label



5) a rhombus w/ 100° angle and 80° angle; label



6) a trapezoid w/ exactly one right angle; label

not possible

Remember:

Parallelogram $\left\{ \begin{array}{l} \text{vertical angles are } \cong \\ \text{adjacent angles are supplementary} \end{array} \right.$